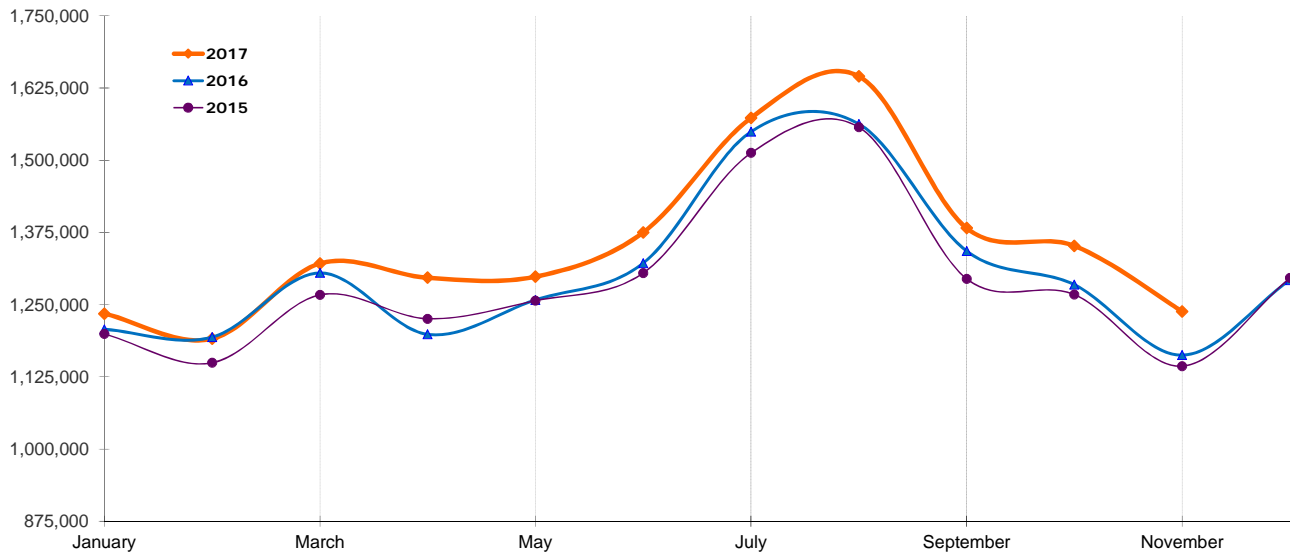


CALGARY INTERNATIONAL AIRPORT LOCAL E&D PASSENGER STATISTICS¹

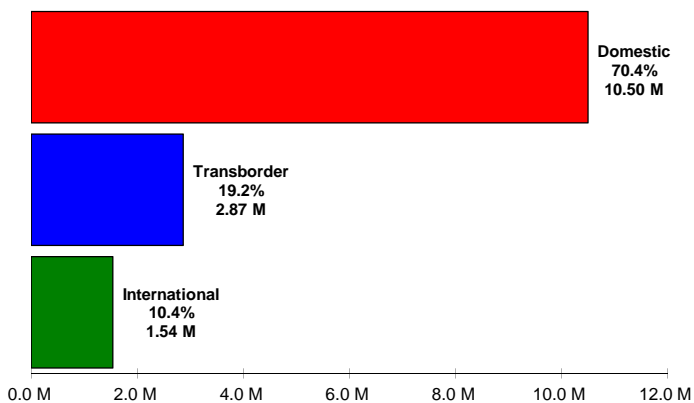
	% Δ 2013	% Δ 2014	2015	% Δ	2016	% Δ	2017	% Δ	
January	3.7%	7.3%	1,199,362	2.3%	1,207,393	0.7%	1,234,533	2.2%	
February	2.2%	9.5%	1,149,378	-0.4%	1,193,728	3.9%	1,191,062	-0.2%	
March	5.5%	5.1%	1,267,052	1.5%	1,304,976	3.0%	1,321,379	1.3%	
	3.9%	7.2%	3,615,792	1.1%	3,706,097	2.5%	3,746,974	1.1%	
April	3.5%	9.7%	1,225,711	-2.3%	1,198,638	-2.2%	1,296,757	8.2%	
May	5.4%	6.5%	1,256,979	2.6%	1,258,371	0.1%	1,298,509	3.2%	
June	1.9%	8.9%	1,304,824	3.2%	1,322,019	1.3%	1,375,227	4.0%	
	3.6%	8.4%	3,787,514	1.1%	3,779,028	-0.2%	3,970,493	5.1%	
July	3.9%	6.3%	1,512,765	4.6%	1,549,513	2.4%	1,573,531	1.6%	
August	6.7%	6.3%	1,557,396	1.8%	1,562,926	0.4%	1,645,543	5.3%	
September	5.4%	5.9%	1,294,924	2.6%	1,342,999	3.7%	1,382,805	3.0%	
	5.4%	6.2%	4,365,085	3.0%	4,455,438	2.1%	4,601,879	3.3%	
October	6.3%	5.7%	1,267,534	-0.7%	1,284,652	1.4%	1,351,865	5.2%	
November	6.4%	4.3%	1,143,632	-1.8%	1,162,753	1.7%	1,238,192	6.5%	
December	7.9%	4.8%	1,296,202	2.1%	1,292,648	-0.3%	-	-	
	6.9%	4.9%	3,707,368	-0.1%	3,740,053	0.9%	2,590,057	5.8%	
Total (YTD)	4.95%	6.65%	15,475,759	1.36%	15,680,616	1.32%	14,909,403	3.62%	
							<i>12 Months Ended Nov '17 »</i>	16,202,051	3.30%

¹ E&D (enplaned & deplaned) statistics include non-revenue passengers. Figures are subject to change and may contain estimates (3.12% of the November 2017 results have been estimated).

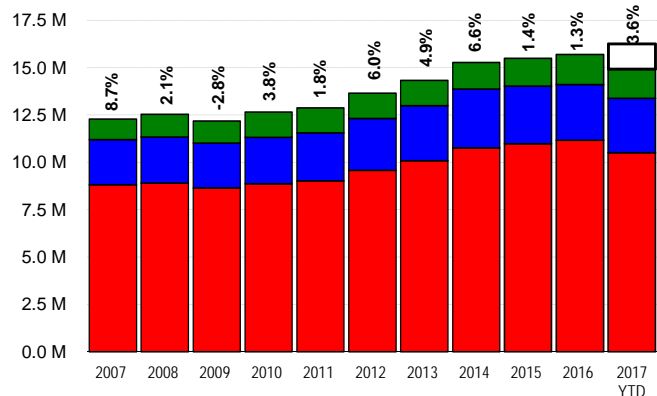
LOCAL E&D PASSENGERS BY MONTH



LOCAL E&D PASSENGERS BY SECTOR Year to Date November 2017



HISTORICAL E&D PASSENGERS With 2017 Forecast



THE CALGARY AIRPORT AUTHORITY PASSENGER STATISTICS BY SECTOR

	% Δ 2013	% Δ 2014	2015	% Δ	2016	% Δ	2017	% Δ
A. Domestic Passengers								
January	5.7%	6.4%	800,941	1.2%	813,327	1.5%	829,767	2.0%
February	3.8%	9.1%	765,176	-0.8%	811,632	6.1%	795,247	-2.0%
March	6.8%	4.4%	839,701	2.3%	894,164	6.5%	875,424	-2.1%
	5.5%	6.6%	2,405,818	0.9%	2,519,123	4.7%	2,500,438	-0.7%
April	5.4%	10.5%	844,426	-2.9%	837,502	-0.8%	881,597	5.3%
May	5.0%	5.9%	909,792	4.8%	921,441	1.3%	941,292	2.2%
June	1.7%	9.3%	955,070	4.3%	966,933	1.2%	990,282	2.4%
	4.0%	8.5%	2,709,288	2.1%	2,725,876	0.6%	2,813,171	3.2%
July	3.4%	7.0%	1,100,847	4.7%	1,122,628	2.0%	1,137,233	1.3%
August	5.5%	7.7%	1,143,595	2.3%	1,140,824	-0.2%	1,201,056	5.3%
September	5.5%	6.5%	949,671	4.0%	979,545	3.1%	1,003,893	2.5%
	4.8%	7.1%	3,194,113	3.6%	3,242,997	1.5%	3,342,182	3.1%
October	5.9%	5.8%	929,501	-0.0%	943,406	1.5%	989,893	4.9%
November	5.0%	3.7%	813,538	-0.8%	819,518	0.7%	856,618	4.5%
December	8.5%	4.8%	918,134	4.1%	901,995	-1.8%	-	-
	6.5%	4.8%	2,661,173	1.1%	2,664,919	0.1%	1,846,511	4.7%
Total (YTD)	5.14%	6.77%	10,970,392	2.04%	11,152,915	1.66%	10,502,302	2.45%
12 Months Ended Nov 2017							11,404,297	2.1%

B. Transborder Passengers								
January	4.1%	8.7%	254,633	1.9%	236,323	-7.2%	237,859	0.6%
February	1.5%	10.0%	253,423	-3.0%	237,016	-6.5%	243,501	2.7%
March	3.5%	8.4%	280,892	-3.7%	263,179	-6.3%	280,174	6.5%
	3.0%	9.0%	788,948	-1.7%	736,518	-6.6%	761,534	3.4%
April	3.8%	9.5%	252,105	-6.3%	222,245	-11.8%	255,552	15.0%
May	8.3%	7.9%	237,527	-4.6%	225,277	-5.2%	243,660	8.2%
June	3.8%	8.5%	243,535	2.9%	241,011	-1.0%	262,122	8.8%
	5.3%	8.7%	733,167	-2.8%	688,533	-6.1%	761,334	10.6%
July	8.7%	5.0%	286,906	4.6%	290,531	1.3%	296,328	2.0%
August	14.1%	1.2%	285,437	1.1%	284,810	-0.2%	297,294	4.4%
September	9.7%	4.0%	242,033	-0.1%	246,507	1.8%	254,789	3.4%
	10.9%	3.3%	814,376	1.9%	821,848	0.9%	848,411	3.2%
October	7.5%	6.3%	244,614	-4.8%	240,156	-1.8%	259,810	8.2%
November	10.7%	3.6%	222,996	-4.5%	220,598	-1.1%	238,088	7.9%
December	8.8%	4.0%	244,884	-5.5%	237,409	-3.1%	-	-
	8.9%	4.6%	712,494	-4.9%	698,163	-2.0%	497,898	8.1%
Total (YTD)	7.01%	6.36%	3,048,985	-1.84%	2,945,062	-3.41%	2,869,177	5.97%
12 Months Ended Nov 2017							3,106,586	5.2%

C. International Passengers								
January	-8.0%	10.4%	143,788	9.9%	157,743	9.7%	166,907	5.8%
February	-5.5%	10.5%	130,779	8.0%	145,080	10.9%	152,314	5.0%
March	2.5%	2.3%	146,459	8.0%	147,633	0.8%	165,781	12.3%
	-3.6%	7.5%	421,026	8.6%	450,456	7.0%	485,002	7.7%
April	-8.7%	4.1%	129,180	10.6%	138,891	7.5%	159,608	14.9%
May	2.5%	7.7%	109,660	1.1%	111,653	1.8%	113,557	1.7%
June	0.3%	6.9%	106,219	-5.8%	114,075	7.4%	122,823	7.7%
	-2.4%	6.2%	345,059	2.1%	364,619	5.7%	395,988	8.6%
July	-1.5%	3.3%	125,012	4.5%	136,354	9.1%	139,970	2.7%
August	1.6%	6.1%	128,364	-0.7%	137,292	7.0%	147,193	7.2%
September	-3.6%	5.6%	103,220	-3.4%	116,947	13.3%	124,123	6.1%
	-1.1%	5.0%	356,596	0.3%	390,593	9.5%	411,286	5.3%
October	6.6%	2.7%	93,419	4.6%	101,090	8.2%	102,162	1.1%
November	8.5%	10.8%	107,098	-3.5%	122,637	14.5%	143,486	17.0%
December	2.4%	6.2%	133,184	3.7%	153,244	15.1%	-	-
	5.5%	6.7%	333,701	1.5%	376,971	13.0%	245,648	9.8%
Total (YTD)	-0.67%	6.36%	1,456,382	3.28%	1,582,639	8.67%	1,537,924	7.59%
12 Months Ended Nov 2017							1,691,168	8.2%

THE CALGARY AIRPORT AUTHORITY PASSENGER STATISTICS BY SECTOR

